

i oŕh; {ks= ea l Məd ekxkə ds fuekZ k dk i ; kbj .k ij i Hkko:  
rkMh [ksr fodkl [k. M ds fo' ks'k l UnHkZ ea

Hkii binz dpekj<sup>1</sup>] 'kkakNk= , oaT; kfr tks kh<sup>2</sup>] l gk; d çkè; kfi dk] Hkksy foHkx] , l O, l O t O  
i fj l j] vYekMh] dpekÅ; fo" ofo | ky; ] ušhrky263601

l kj k'k % i Lŕr v/; ; u {ks= dk i Fke n"V; k {ks=h; l oŕk.k djus ij i k; k x; k fd ; gk; cM&cMə  
i oŕka dks dkVdj l Məd ekxkə dk fuekZ k fd; k tk jgk gA ftl l s ; gk; ds Hkksrd okrkoj .k dks  
{kfr igph gš tš s ikdfrd ouLifr u"V gks jgh gš o ; gk; i dkfgr gkus okyh ufn; ka dk ekxZ  
vo: ) gks jgk gA ; gk; ds i kNfrd ty l kŕ u"V gks jgs gA ftl dkj .k ty i nllk .k] ok; q  
i nllk .k] /ofu i nllk .k o enk i nllk .k tš h xEHkj l EL; k, a mRi Uu gks jgh gš l kFk gh l kFk ; gka  
fuokl djus okys i kNfrd thoka ds vkokl o ekuoh; vkokl Hkh udkj kRed : i l s i Hkksfor gq  
gš Nf" k ; kx; Hkfe Hkh i Hkksfor gpZ gA bl i dkj l s dgk tk l drk gš fd l Məd ekxkə ds fuekZ k  
l s i oŕh; {ks= ea i ; kbj .k i Hkksfor gŕk gA i ; kbj .k vou; u ds dkj .k vl nŕfyr gks jgs  
i ; kbj .k ea vucl l eL; k, a mRi Uu gks jgh gA bu l eL; k, a ds fujkdj .k gŕq l rr fodkl dh  
vo/kj .kk dks vi ukuk pfg, A ftl l s i ; kbj .k dks de gkfu i gpk dj fodkl dk; Zfd, tk; A  
l adŕ' kCn % Hkksrd Lo: i] jktekx] xkeh.k l Məd Hk [kyu] i ; kbj .kh; i Hkko] vkfFkd i Hkko]  
l keftd i Hkko

i Lrkouk %&i kphu dky l s gh i ; kbj .k o ekuo ds chp ?kfu"B l Ecl/k jgk gš rFk bu nkuka  
dks vki l ea , d nll js dk ijd ekuk tkrk gA i ; kbj .k l s vHki k; eq[ ; i l s i M+ i kškj  
i 'k&i {kh} tho&tUrj ty] ok; j feVv h euŕ; vkfn l s gA ekuoh; fØ; kvka l s i ; kbj .k dh gkfu  
gkuk i ; kbj .k vou; u dgykrk gA bl l s ekuoh; thou i Hkksfor jgrk gA vr% tc i ; kbj .kh;  
l a k/kuka dk fonkgu fd; k tk; sxk rks i ; kbj .kh; l eL; k, a vo' ; mRi Uu gksxA ; | fi i kNfrd  
l a k/kuka dk mi ; ksx fd; s fcuk ekuoh; fodkl vl EHko gš i jUrq i ; kbj .k ds ?kVdka dks de l s  
de i Hkksfor djds vf/kd fodkl djuk gh okLrfod fodkl gksxA

vkfndky l s gh ekuo i ; kbj .k dk mi Hkksx djrk gŕk vk jgk gA bl dky ea ekuo dk  
ml ds i ; kbj .k ds l kFk l nŕfyr l Ecl/k Fk] i jUrq oržeku l e; ea c<ŕh ekuoh; tul a[ ; k rFk  
ml ds i fj .kkeLo: i gkus okyk i kNfrd l a k/kuka ds fonkgu l s fudV Hkfo"; ea ekuo thou  
l adV ea Qj tk; sxkA bl l s vkfFkd fodkl : d tk; sxk i kNfrd l a k/ku u"V gks tk; sçj 'kq)  
i s ty l ekr gks tk; sxkA

oržeku l e; ea ekuo dh c<ŕh vko' ; drkva us i ; kbj .k l s NM&NkM+ dh gA ftl dk  
i ; kbj .k ij l h/kk i Hkko rks i Mē gh gš l kFk gh vkfFkd] l keftd o l kNfrd {ks= Hkh bl ds  
i Hkko l s vi Hkksfor ugha jgs gA vkt i ; kbj .k vl nŕy l Ei nllz fo' o ds fy, fpŕrk dk fo" k; cuk  
gŕk gA tgi vkt ekuo fodkl dh vucl Åpkb; ka dks Niv jgk gš ogh og vi us Hkksrd i ; kbj .k  
dks vR; f/kd uŕl ku Hkh i gpk jgk gA fodkl dk i ; kZ ekuk tkus okyk l Məd fuekZ k o  
pkMh dj .k i oŕh; {ks= ka ea ½ fo' ks'kdj mPp fgeky; h {ks= ka ek i ; kbj .k l Ecl/kh vucl l eL; kvka ds  
fy, Hkh mRrjn; h gA

mn-ns ; %&i Lŕr v/; ; u dk; Z fuEu mn-ns ; ka dks /; ku ea j [kdj fd; k x; k  
gA

1&fodkl [k. M rkMh [ksr ea l Məd ekxkə ds foLrkj dh tkudkj h i klr djukA  
2&l Məd ekxkə ds fuekZ k l s /kj kryh; Lo: i] <ky] tyi dkj] i kNfrd ouLifr rFk i ; kbj .k ds  
Hkksrd ?kVdka ij i Məs okys i Hkkoka dh foopuk djukA

3&l Mēl ekxlā ds fuekz k l s ekuoh; thou ij i Meus okys i Hkkoka dk v/; ; u djuka fof/k rā= , oa vkqDMk l æg.k &iLrqr 'kks'k dk; Z dks iwkz djus ds fy, vkqDMka dk l æg.k fuEu idkj fd; k x; kA

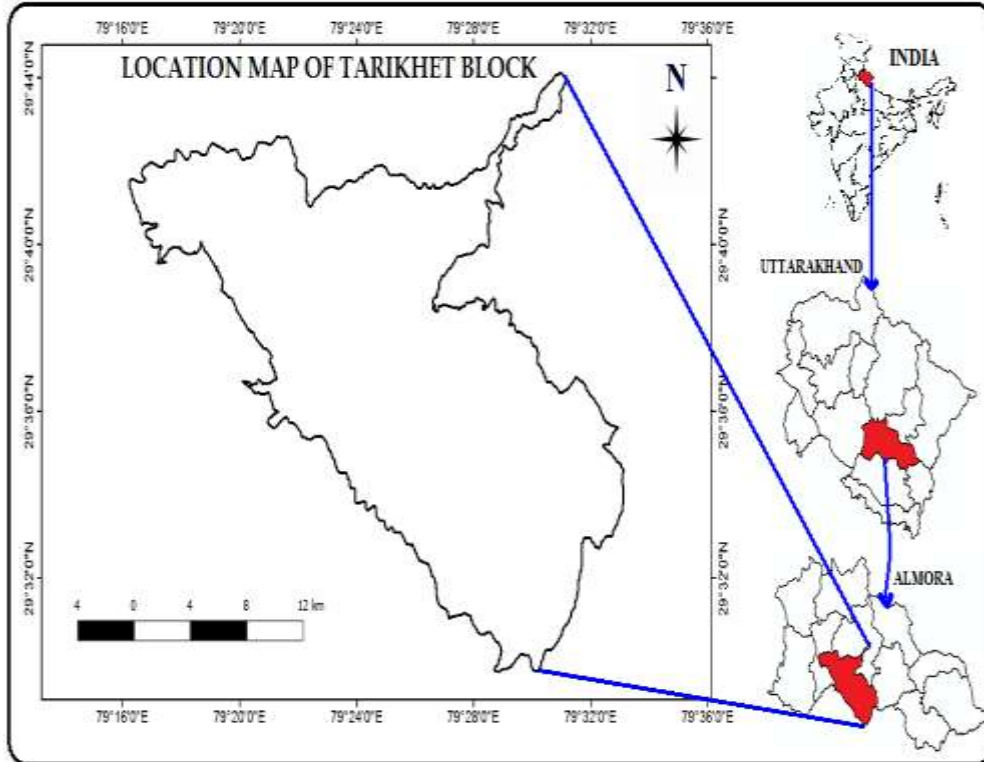
1&i kFkfed vkqDMs fodkl [k.M rkMh[kr dk l o'k.k dj o iHkkfor {ks=ka ea Hkæ.k djds i klr fd; s x; s gA

2&f}rh; d vkqDMs fodkl [k.M rkMh[kr dh okf'kzd o ykd fuekz k foHkkx vYekDMk rFkk i kUrhi; [k.M jkuh[kr l s i klr fd; s x; s gA

bl idkj iLrqr v/; ; u dk; Z grq foHkuu rF; kq vkqDMka %i kFkfed o f}rh; d½ o l puvkva dks vk/kkj cuk; k x; k gA bu rF; ka dks %i idk'kr o vi idk'kr½ jkt dhi; o xj jkt dhi; l k rka l s i klr fd; k x; k gA

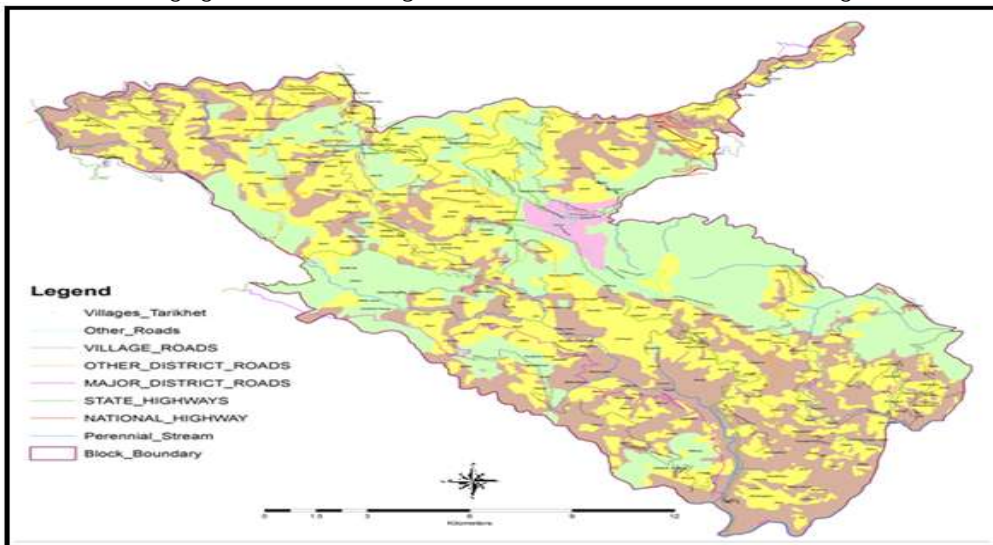
v/; ; u {ks= %&fodkl [k.M rkMh[kr uo l ftr mUjk[k.M jkT; ds d'pÅ; e.My ds vYekDMk tuin ea fLFkr gA fodkl [k.M rkMh[kr ds mUjk fn'kk ea }kjkgkV fodkl [k.M] nf{k.k fn'kk ea uSahrky tuin rFkk i dZ fn'kk ea gokyckx fodkl [k.M o i'pe fn'kk ea fHkfd; kl S; fodkl [k.M fLFkr gA rkMh[kr fodkl [k.M iwk' % i o'rh; gA ; gk; ij fuokl djus okys vf/kdkk ekuo l epk; ds thfodki ktZu dk l k/ku Nf'k o i'kq kyu gA mUjk[k.M ds iæ[k i ; M/d LFky jkuh[kr] pksfv; k xkMZu] gMk[kku eflnj o fculj egknø efnj rkMh[kr fodkl [k.M ea gh fLFkr gA

fodkl [k.M rkMh[kr dk v{kdkh; foLrkj 29°49' l s 29° 73'mUkj h v{kdk rd gS rFkk nS'kkarjh; foLrkj 79° 27' l s 79° 54' i dhl nS'kkarj rd gA bl fodkl [k.M dk {ks=Qy 300-85 oxZ fd-eh- gA bl fodkl [k.M ea orZku l e; %2011 ds vuq kj½ 11 U; k; i pk; r o 271 xke gA ftl ea 263 vkckn rFkk 08 xj vkckn xke gA tux.kuk 2011 ds vuq kj ; gk; dh tul a; k 66831 gA ; gk; dh l k{kjrk nj 72 i fr'kr gA bl fodkl [k.M dh mUkj h l hek xxkl unh }kj k cuk; h x; h gA bl fodkl [k.M dh l epz ry l s vkr Åpkbz 1859 eh0 gA



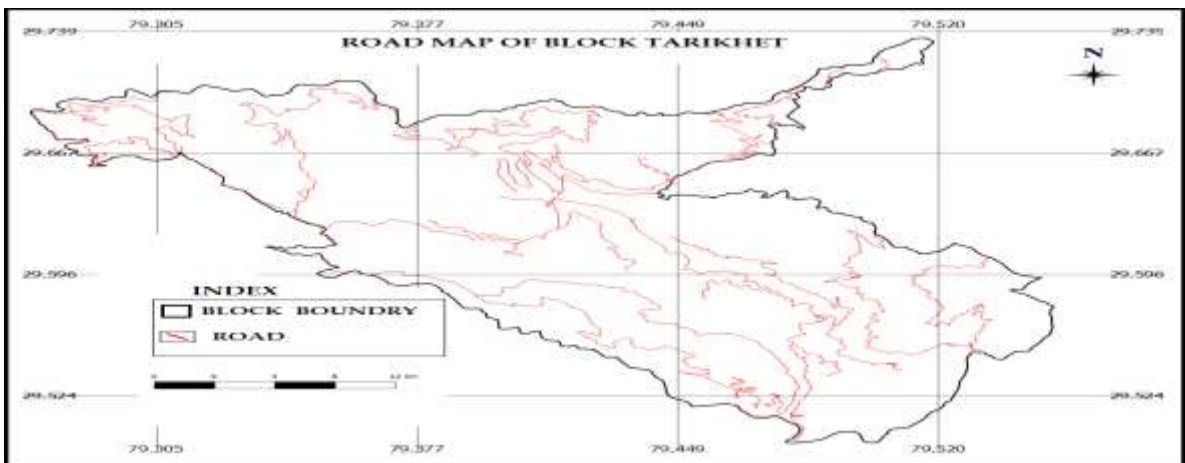
fp=-1 v/; ; u {ks= dk vofLFkr ekufp=

fodkl [k.M rkMh[kr ea l Md ekxka dk forj .k%  
 fodkl [k.M rkMh[kr ea fofHku i dki ds l Md ekxka ds ek/; e l s vyx&vyx {ks=ka dks tkMh  
 x; k gA ftudk v/; ; u fuEu 'kh"kdka ds ek/; e l s fd; k tk l drk gA  
 1&jk"Vh; jktekxZ l a[; k&87%& jk"Vh; jktekxZ l a[; k 87 rkMh[kr fodkl [k.M l s xqtjrk  
 gA ; g ekxZ mukjk[k.M jkT; ea mukj insk l hek l s #na j&i ruxj&gY}kuh&uSahrky&  
 Hkocyh&vYekMh&jkuh[kr&}kjkgkV&xS l S k&vlfncjh&d.kd z kx ds ikl jk"Vh; jktekxZ 58 rd  
 gA ; g fodkl [k.M rkMh[kr ds [kj uk] jkuh[kr o xxkl {ks=ka dks tkMh gA bl ekxZ dh  
 v/; ; u {ks= ea yEckbZ 9-12 fd-eh- gA  
 2&jkT; ekx% fodkl [k.M rkMh[kr ds vUrxZr i dki [k jkT; ekxZ fuEu gA  
 2-1&[kj uk jkuh[kr jkeuxj ekvJ ekxZ l a[; k&14%& ; g ekxZ fodkl [k.M dk eq[; ekxZ  
 gA ; g ekxZ [kj uk l s ikjEHk gkdj jkuh[kr] rkMh[kr] l ksh gkrs gq Hkrjkt [kku jkeuxj  
 uSahrky ftys ea idsk djrk gA [kj uk l s vkxs ; g ekxZ fodkl [k.M dks Hkocyh] uSahrky o  
 gY}kuh ts s cMh'kgjka l s tkMh gA ; g l Md ekxZ i wkZ% i Ddk gA bl ekxZ ij Mkej rFk  
 dshV dh l rg gA bl ekxZ dh yEckbZ fodkl [k.M ea 42-49 fd-eh- gA



fp=-

2fodkl [k.M rkMh[kr ea l Md ekxka dk LFkfd forj .k ekufp=



fp=-3fodkl [k.M rkMh[kr ea ftyk l Md ekxka dk LFkfd forj .k ekufp=  
 2-3&jhph fcYys[k Hkqt ku ekvJ ekx%& ; g l Md ekxZ fodkl [k.M rkMh[kr ds jhph fcYys[k  
 uked LFkku dks Hkqt ku gkrs gq [kj uk Hkocyh l s tkMh gA ; g ekxZ i wkZ% i Ddk l Md ekxZ gA  
 ; g rkMh[kr fodkl [k.M dk eq[; ftyk ekxZ gA bl dh dgy yEckbZ 22-16 fd-eh- gA

fodkl [k.M rkMh[kr ds vU; I Məd ekx%

1&pk&fV; k dpyk[kr ceL; ekvJ ekx%& ; g rkMh[kr fodkl [k.M dk ed; ekxZ gS tks  
 pk&fV; k dpyk[kr rFkk ceL; ds vkl &ikl ds xpkā dks jkuh[kr I s tkM&rk gA ; g 06  
 fdykehVj dPpk I Məd ekxZ gS vkj 16 fdykehVj i Ddk I Məd ekxZ gA

2&fl eksh vH; kMh ekvJ ekx%& ; gk ekxZ fl eksh vH; kMh xpkā dks jkuh[kr I s tkM&rk gA  
 ; g 16 fdykehVj i Ddk o 05 fdykehVj dPpk I Məd ekxZ gA

3& xfu; k|ksh&Vkuk&fo'kkydksV I Məd ekx%& ; g xfu; k|ksh] Vkuk] fo'kkydksV I Məd  
 ekxkā dks tkM&rk gA ; g ekxZ 03-50 fdykehVj dPpk o 10 fdykehVj i Ddk I Məd ekxZ gA

fodkl [k.M rkMh[kr ds xkeh.k I Məd ekx% fodkl [k.M rkMh[kr ea fuEu xkeh.k I Məd  
 ekxZ gA

1&rkMh[kr i hi yh eatj [kku ekvJ ekx%& bl I Məd ekxZ ds ek/; e I s i hi yh o eatj [kku  
 xpkā dks rkMh[kr I s tkM&rk x; k gA ; g ekxZ dPpk gA bl dh yEckbZ 7-15 fdykehVj gA

2&yksvj eksh jkuh[kr ekvJ ekxZ %& ; g I Məd ekxZ yksvj eksh jkuh[kr dks jkuh[kr I s  
 tkM&rk gA ; g i Ddk I Məd ekxZ gA bl dh yEckbZ 04 fdykehVj gA

3&jkuh[kr fpy; kuskh fyrd ekxZ %& ; g ekxZ i w&rk% Mkej rFkk I h&v d&hV I s cuk; k  
 x; k gA ; g ekxZ 2-60 fdykehVj gA ; g ekxZ fpy; kuskh dks jkuh[kr I s tkM&rk gA

4&I ksh] frrkyh[kr peM&[kku ou ekvJ ekxZ %& I ksh] frrkyh[kr] peM&[kku ou ekvJ  
 ekxZ ds ek/; e I s peM&[kku o frrkyh[kr o I ksh] {ks= dks jkuh[kr I s tkM&rk x; k gA I ksh] I s  
 peM&[kku rd I Məd ekxZ dh yEckbZ 7-40 fdykehVj gA ; g ekxZ Mkej rFkk I h&v d&hV dh  
 I rg I s cuk; k x; k gA bl h i dkj frrkyh[kr I ksh] I Məd ekxZ dh yEckbZ 03 fdykehVj gA  
 bl ea i w&rk% i Ddk Mkejhdj.k fd; k x; k gA

5&I ksh] M; kMk[kky fl ykj egknō ekvJ ekxZ %& ; g I ksh] nōyh[kr M; kMk[kky]  
 'ksh/kkj] I xush gkrs gq fl ykj egknō rd gA ; gk rd bl dh dpy yEckbZ 30 fdykehVj gA  
 ; g ekxZ I ksh] I s I ksh/kkj rd i Ddk Mkej I s fuf&rk gA bl I s vkxs 10 fdykehVj fl ykj  
 egknō rd ; g dPpk I Məd ekxZ gA ; g I Məd ekxZ fodkl [k.M dk , d egRo i w&rk I Məd ekxZ  
 gS D; k&rd fodkl [k.M ds nsh LFk xpkā dks ed; cktkj jkuh[kr I s tkM&rk gA

6&mi jkMh] f'kyaxh ekvJ ekxZ %& bl ekxZ ds ek/; e I s f'kyaxh xkp dks mi jkMh I s tkM&rk  
 x; k gA ; g I Məd ekxZ 01 fdykehVj yEck gS tks i w&rk% i Ddk I Məd ekxZ gA

7&jkuh[kr , jkM+ ekxZ %& bl I Məd ekxZ ds ek/; e I s , jkM+ dks jkuh[kr I s tkM&rk x; k gA  
 bl dh dpy yEckbZ 04 fdykehVj gS tks 03 fdykehVj dPpk rFkk 01 fdykehVj i Ddk I Məd  
 ekxZ gA

8&i Fkyh e.MydksV ekxZ I s xke fl eksh fyrd I Məd ekxZ %& ; g ekxZ i Fkyh dks  
 e.MydksV I s tkM&rk gA ; g 03 fdykehVj dPpk I Məd ekxZ gA bl ekxZ I s xke fl eksh ds  
 fy, , d fyrd I Məd ekxZ dk fueZk fd; k x; k gA ; g fyrd I Məd ekxZ 1-50 fdykehVj yEck  
 gA

9&iU; kyh Jh jke efnj I Məd ekxZ iU; kyh Jh jke efnj ekxZ iU; kyh xkp dks Jh jke  
 efnj ekxZ I s tkM&rk gA ; g 1-42 fdykehVj yEck dPpk I Məd gA

10&cktky cktkj I s dukj vfy; kdk.Ms ekvJ ekxZ& bl ekxZ ds ek/; e I s dukj xkp  
 dks cktky cktkj I s tkM&rk x; k gA ; g 2-65 fd0eh0 yEck I Məd ekxZ gA ; g dPpk I Məd ekxZ  
 gA

11&xfu; k|ksh /kekbZtj Fkki yk ekvJ ekxZ& bl ekxZ ds ek/; e I s /kekbZtj xfu; k|ksh o  
 Fkki yk dks vki I ea , d nsh ds I kFk tkM&rk x; k gA ; g fodkl [k.M rkMh[kr dk , d  
 egRo i w&rk I Məd ekxZ gA bl ekxZ dh yEckbZ 0-725 fd0eh0 gA ; g dPpk I Məd ekxZ gA

i o&rh; {ks=ka ea I Məd ekxkā ds fueZk k dk i ; k&oj.kh; i Hkko%ā o&rh; {ks=ka ea I Məd  
 ekxkā ds fueZk k us tgk; ekuo dks u, fodkl dh vkj vx& j fd; k gS ogha i ; k&oj.k dks Hkjh  
 ek=k ea upl ku Hkh i gpk; k gA I Məd ekxkā ds fueZk k I s Hk&rd okrkoj.k i j udkjRed i Hkko  
 i M; gA



• I Mēd fuekZk dh i fØ; k ea mi jh rFkk fupys nku ka <kyka ij ouLi fr ds vkoj .k dks vfuok; 7-% vfu; kf tr rFkk vfu; f=r rjhd s l s u"V fd; k tk jgk gA ftl l s i kÑfrd ouLi fr i Hkkfor gks jgh gA

• i Hkkfor {ks=ka ea HkL [kyu] HkredVko] ouka dk dVku] ty i nllk.k dh l eL; k, a mRi Uu gks jgh gA bl i djkj l s bl i fØ; k dk udkj kRed i Hkko ÑF" k ; kX; Hkfe ij Hkh i M+ jgk gS i fj .kkelo: i l kekf td okrkoj .k Hkh i Hkkfor gks jgk gA ftl dkj .k l s fodkl [k.M dks dbZ ckj vki nkvka dk l keuk Hkh djuk i M+ gA bl h ds l kFk vuod i djkj ds i nllk.k ka us Hkh tUe fy; k gA ftl dk ekuo thou ij udkj kRed i Hkko i M+ gA I Mēd fuekZk l s fodkl [k.M rkMh [kr dk i ; kbj .k fuEu i djkj l s i Hkkfor gqvk gA

1&HkL [kyu dh l eL; k% fodkl [k.M rkMh [kr dk v/ ; ; u djus l s Kkr gqvk fd ; gk ij I Mēd ekxka ds fuekZk gkus l s HkL [kyu dh l eL; k mRi Uu gpZ gA fodkl [k.M ds dbZ xkp tS s fl ey/kkj] MkMk [kky] l kSyk/kkj] l xus/h vkfn {ks=ka ea HkL [kyu gqvk gA ftl dkj .k ; gk dh ouLi fr] ÑF" k ; kX; Hkfe] unh ekx] ekuoh; vkokl vkfn i Hkkfor gq gA I Ei wZ fodkl [k.M ea /ku dh vR; f/kd gkfu gpZ gA tS s peM [kku] l kSh] l kSyk/kkj {ks= ea HkL [kyu l s edkuka dks gkfu igph gA

2&i oZh; <kyka ij i Hkko% i oZh; {ks=ka ea I Mēd ekxka ds fuekZk l s ; gk ds i oZh; <kyka ij Hkh udkj kRed i Hkko i M+ gA ftl l s ; gk ds i oZh; ka dk vR; f/kd dVku gqvk ftl dkj .k l s ; gk ij foHkLU i djkj dh i ; kbj .kh; l eL; k, a mRi Uu gks jgh gA vr% I Mēd fuekZk l s ; gk ds i oZh; ka dh HkSxkyd l jpuK detkj i M+ x; h gA mnkgj .k ds fy; fodkl [k.M ds rkMh [kr] i hi yh] eatj [kku ekVj ekx] foYys [k fyad ekx] l kSh frkyh [kr ea i oZh; ka dh vR; f/kd dVku gkus ds dkj .k ; gk ds i oZh; <ky i wZ% i Hkkfor gq gA vr% yxkrkj gks jgs fuekZk dk; l s ; gk ds i oZh; <ky detkj gks tk jgs gA ftl l s ; gk ds HkSrd i ; kbj .k ea vl aryu dh fLFkr mRi Uu gks jgh vkj ekuoh; thou ij Hkh udkj kRed i Hkko i M+ jgk gA fuekZk dk; ka l s enk vijnu , d xEHkj l eL; k gA I Mēd ekxka ds fuekZk ds l e; vR; f/kd ek=k ea enk dk vijnu gsrk gA

I kj .kh- 1 HkL [kyu l s i Hkkfor {ks=

| Ø- I a | I Mēd dk uke                               | i Hkkfor {ks=                           |
|--------|--|---|
| 1      | I kSh foU l j] peM [kku ou ekVj ekxZ       | I kSh dk taxy                           |
| 2      | I kSh] M; kMk [kky] fl ykj egknØ ekVj ekxZ | I kSh] M; kMk [kky] I kSyk/kkj] l xus/h |
| 3      | rkMh [kr i hi yh] eatj w [kku ekVj ekxZ    | rkMh [kr] i hi yh {ks=                  |
| 4      | pkSfV; k] dpyk [kr] ceL; ; ekVj ekxZ       | pkSfV; k] HkMxkp] dpyk [kr] ceL; ;      |

Lksr% ykd fuekZk foHkx

3&i kÑfrd ouLi fr ij i Hkko% fodkl [k.M rkMh [kr ea I M-d ekxka ds fuekZk l s i kÑfrd ouLi fr Hkh i Hkkfor gpZ gA bl fodkl [k.M dh eq; i kÑfrd ouLi fr bl i djkj gA phM] ck] t] cj] k] k] nØnkj] Hkhey] ru] cru] egy] dkQy] frfey] ine] l c] vkMh [kkuh] uhc] ekYVkj vkfn gA

bl fodkl [k.M ea vf/kdk k I Mēd ekxka dk fuekZk taxyka ds e/; ea gqvk gA ftl dkj .k l s ; gk dh i kÑfrd ouLi fr dk vR; f/kd dVku gqvk gA ; gk dh ouLi fr ij I M-d ekxka ds fuekZk ds i Hkko dks fuEe l kj .kh l s l e>k tk l drk gA

I kj.kh- 2 I Md ekxk ds fuekz k l s i Hkkfor ouLi fr

| Ø- l a | I Md dk uke                               | i Hkkfor {ks=                                      | i Hkkfor ouLi fr   |
|--------|---|--|--|
| 1      | I ksh frkyh [kr peM+kku ou ekv/j ekxZ     | I ksh] foU j] frkyh [kr] peM+kku                   | phM+ ck't] cj'k'k] nonkj] mri'h'k] dkQy] ruA             |
| 2      | I ksh M; kMk [kky fl ykj egknØ ekv/j ekxZ | I ksh] M; kMk [kky] I xuvh] fl ykj egknØ] fri ksyk | phM+ ck't] cj'k'k] mri'h'k] dkQy] ru] cru] ] [kMhd] ineA |
| 3      | rkMh [kr ihi yh eatj] [kku ekv/j ekxZ     | rkMh [kr] ihi yh {ks=                              | phM+ ck't] dkQy] egy] ru] ine] HkheyA                    |
| 4      | pk&FV; k dpyk [kr cel; ekv/j ekxZ         | pk&FV; k {ks=                                      | phM+ ck't] cj'k'k] mri'h'k] nonkj] l c] uk'ki frA        |

}kj l ka l s [kkMh ekv/j ekxZi ?uxr ij; kstuk ds fuekz k grq fnukd 01&11&2014 dks fd; s x; s fujh{k.k ds vuq kj vkofnr ouHkfe rFkk uki Hkfe ij i Hkkfor gkus okys o{kka dh x.kuk dh xbZ o fujh{k.k ds nksj ku i Hkkfor gkus okys o{kka dh fuEukuq kj x.ku dh xbA

I kj.kh- 3 I Lrkfor ouHkfe ij i Hkkfor gkus okys o{kka dk Hkfeokj @i ztkfrokj @0; kl okj foqj.k

| dØl Ø     | Hkfe dh      | o{k dh    | o{kka dk 0; kl okj foqj.k %l eh e% |       |       |       |       |       |              | ; ksx |
|-----------|--------------|-----------|------------------------------------|-------|-------|-------|-------|-------|--------------|-------|
|           | J.s kh       | lktkfr    | 20-30                              | 30-40 | 40-50 | 50-60 | 60-70 | 70-80 | 80 l s vf/kd |       |
| 1         | oui pk; r    | phM+      | 60                                 | 8     | 60    | 2     | 6     | 2     | 1            | 139   |
| 2         | I j f{krou   |           | 0                                  | 0     | 0     | 0     | 0     | 0     | 0            | 0     |
| 3         | fl foyl ks e | phM+      | 21                                 | 18    | 17    | 15    | 7     | 1     | 0            | 79    |
| 4         |              | dkQy      | 1                                  | 0     | 0     | 0     | 0     | 0     | 0            | 1     |
| 5         | ; ks&ouHkfe  |           | 82                                 | 26    | 77    | 17    | 13    | 3     | 1            | 219   |
| 6         | uki Hkfe     | egy       | 2                                  | 0     | 0     | 0     | 0     | 0     | 0            | 2     |
| 7         |              | nkfMe     | 2                                  | 0     | 0     | 0     | 0     | 0     | 0            | 2     |
| 8         |              | lne       | 0                                  | 0     | 1     | 0     | 0     | 0     | 0            | 1     |
| 9         |              | Hkhey     | 6                                  | 0     | 0     | 0     | 0     | 0     | 0            | 6     |
| 10        |              | [kpkuh    | 1                                  | 0     | 0     | 0     | 0     | 0     | 0            | 1     |
| 11        |              | uk"ki krh | 1                                  | 0     | 0     | 0     | 0     | 0     | 0            | 1     |
| 12        |              | v [kj kM+ | 1                                  | 1     | 0     | 0     | 0     | 0     | 0            | 2     |
| 13        |              | phM+      | 10                                 | 2     | 2     | 0     | 0     | 0     | 0            | 14    |
| 14        |              | dkQy      | 1                                  | 0     | 0     | 0     | 0     | 0     | 0            | 1     |
| dpy ; ksx |              |           | 24                                 | 3     | 3     | 0     | 0     | 0     | 0            | 30    |
| egk; ksx  |              |           | 106                                | 29    | 80    | 17    | 13    | 3     | 1            | 249   |

Lks-% ou foHkx] vYekMk

I kj.kh-4 oSfYi d l ejs[k.k ij ekxZ fuekz k l s i Hkkfor gkus okys foHkku i ztkfr; ka ds o{kka dh x.kuk phvYekMk ds fodkl [k.M rkMh [kr ed ksh&noyh [kr&M; kMk [kky&fl ykj egknØ ekv/j ekxZ

ds fdeh0 10-00 l s i Lrk&Mkokj rd eks/jekxl ds uofuekz k l s i Hkkfor gkuokys fofHkuu iztkfr ds o{kkadh x.kuk

| dDl 0 | vkj f{krrou@i pk; rh ou@fl foy ou o uki Hkfe dkh uke | fdLe iztkfr | 0; kl okj Js kh |       |       |       |       |       |              | ; ksx |
|-------|--|-------------|-----------------|-------|-------|-------|-------|-------|--------------|-------|
|       |  |             | 20-30           | 30-40 | 40-50 | 50-60 | 60-70 | 70-80 | 80 l s vf/kd |       |
| 1     | i Lrk&Mki kjouipk; r                                 | phM+gjk     | 9               | 16    | 15    | 5     | 2     | &     | &            | 47    |
| 2     | i Lrk&Mki kjcuki                                     | phM+gjk     | 4               | 2     | &     | &     | &     | &     | &            | 6     |
| 3     | l s i Lrk&Mki kjouipk; r                             | PhM+gjk     | 16              | 45    | 16    | 2     | 1     | &     | &            | 80    |
| 4     | l s i Lrk&Mki kjouipk; r                             | phM+gjk     | 13              | &     | &     | &     | &     | &     | &            | 13    |
| 5     | l s i Lrk&Mki kjouipk; r                             | phM+gjk     | 8               | &     | &     | &     | &     | &     | &            | 8     |
| 6     |  | dy ; ksx    | 50              | 63    | 31    | 7     | 3     | 0     | 0            | 154   |

Lksr-%ou fofHkx] vYekMk

4&thoka ds i kNfrd vkokl ka ij i Hkko%& fodkl [k.M rkmM+ [kr ea vf/kdk k l Med ekxka dk fuekz k taxyka dks l kQ djds fd; k x; k gA ts s fodkl [k.M ds l ksh] frnkyh [kr peM+ [kku ou ekvj ekxl dk fuekz k ijs taxy ds chipka chip gA bl h izdkj l ksh M; kmk [kyk fl ykj egkno ekvj ekxl o pksfV; k dpyk [kr cel; ekvj ekxl dk fuekz k Hkh taxyka dks dkV dj fd; k x; k gA

vr% bu taxyka dks dkVus l s ; gk fuokl djus okys i kNfrd tho ts s dlnj] yaxij] HkM+ k] phrk] ykMh] l vj] fgju] ck?k vkfn ds vkokl i Hkkfor gq gA fti dkj.k ; s tho ekuoh; vkokl ka dh rjQ vkus yxs gs vj] ekuoh; xfrfof/k; ka dks i Hkkfor dj jgs gA

5&l Med ekxka ds fuekz k rFkk j [k j [kko ea /ku dk vi 0; ; %& iorh; {ks=ka ea l Med ekxka ds fuekz k o muds j [k&j [kko ea vR; f/kd /ku vi 0; ; djuk i M+rk gA ; gk l Med ekxka dk fuekz k cM&cM+ i orka dks dkVdj fd; k trk g\$ vj ftlga dkVus ds fy, cMh&cMh e' khuka dh vko'; drk gksh gs tks vR; f/kd egaxh gksh gA vr% iorh; {ks=ka ea l Med ekxka dk fuekz k djuk , d vR; f/kd [kphzh i f0; k gAcj l kjr ds eks e ea fodkl [k.M ds vf/kdk k l Med ekxl Vw trs g\$ ftlga ckj&ckj Bhd djuk i M+rk gA vr% iorh; {ks= ea l Med ekxka dks l j fkr j [kus ds fy, vR; f/kd /ku 0; ; djuk i M+rk gA

6&ty/kkj kvka ij i Hkko%& fodkl [k.M rkmM+ [kr ea l Med ekxka ds fuekz k l s ; gk ds i kNfrd ty/kkj k, a Hkh i Hkkfor gplz gA ; gk ij i orka dks dkVdj ufn; ka ea Mky fn; k x; k gs fti l s ; gk ds tyl kr i nfr gks x; s gs ts s fodkl [k.M ds fcll j egkno efnj ds ikl izkfr gkus okyk HkS [kj h x/kj s ea l Medka dk vol kn Mky fn; k x; k gs fti l s ; gk dk ty i nfr gks x; k gA



Nk; kfp= % l M-d ekxl ds fuekz k l s ty l kr ka ij udkj kRed i Hkko

7. कृषि योग्य भूमि पर प्रभाव—{ks= ea v/; ; u l s Kkr gpyk fd fodkl [k.M ds vf/kdkk'k xke tS s uS/h fl ey/kkj] cskMk/ csk] ukSk vkfn vucl xkoka ea l Med fuekZk l s l h<hankj [kr'ka ij udkjkrEd i Hkko i Mk gA

l kj.kh- 5 विकासखण्ड ताड़ीखेत में सड़क निर्माण से वनस्पति तथा कृषि योग्य भूमि पर प्रभाव

| Ø0 l Ø | l Med ekxZ dk uke                                    | कृषि योग्य भूमि, वा Hkfe | o'kka dh l a' ; k          |
|--------|--|--------------------------|----------------------------|
| 1      | xfu; k   ksyh&i kyh&unksyh<br>ekxZ/jekxZ             | 5-680 gØ                 | 245 phM                    |
| 2      | xfu; k   kyh&i kyh&unksyh<br>ekxZ l s l ksyk/kkj rdA | 4-960 gØ                 | 15 phM                     |
| 3      | rkmh [kr&i hi yh(&etw]kku<br>ekxZ/jekxZ              | 8-500 gØ                 | 130 phM 1/60 vU; Qynkj 1/2 |
| 4      | [kX; kj l s dkb; kWekxZ/j ekxZ                       | 2-540 gØ                 | 16                         |

Lks-% ou foHkx] vYekMk



Nk; kfp=- i o'rh; {ks= ea l Med fuekZk

mijkDr i Hkkoka ds vfrfjDr ekuo tho ij l h/ks i Meus okys i Hkkoka ea ok; q i nll.k , oa /ofu i nll.k orZeku ea , d u; h l eL; k ds : i ea mHkdj l keus vk jgh gA ftl ds HkkoH i fj.kke dbZ vU; LokLF; l Ecu/kh l eL; kvka ds : i ea l keus vk l drs gA

l pko

i o'rh; {ks=ka ea thou js[kk ds uke l sigpkuh tkus okyh l Meda Hkfo"; ea ekuo thou rFk i ; kbj.k ds fy, [krjk mRiUu u dj ik; ; bl ds fy, vko'; d gS fd i ; kbj.k ds ekudka ds vuq i gh l Med fuekZk dk; Z fd; s tk; ; fgeky; h i o'rh; {ks= i kNfrd vki nkva ds i fr vfr l onu'kyh gA vr% bu {ks=ka ea l Med ekxka dk fuekZk djrs l e; ; g /; ku j [kuk vfr vko'; d gS fd ogk; dh i kNfrd ouLi fr] Nf'k ; kX; Hkfe o pkjxkgka dks gkfu u i gps ; k de l s de gkfu i gpa bl fn'kk ea fuEu l pko fn; s tk l drs gA

1&l Med ekxka ds eyos dks unh ea ugha Mkyuk pkfg, A

2&, s s {ks=ka ea l Med ekxka dk fuekZk ugha djuk pkfg, tgk; l s ekuo vf/kokl ka dks folFkfi r djuk i MA

3&i o'rh; {ks=ka ea vR; f/kd pkMh l Med ekxka dk fuekZk ugha fd; k tkuk pkfg, A



4&l Mēl ekxlā ea ty dh fudkl h dsfy, mfpr 0; oLFkk dh tkuh pkfg, A  
 5&iōrh; {ks=ka ea l Mēl ekxlā ds fdukjs i Ddh jfyax} ykgs dh etar tkyh ; k nhokj dk  
 fuekZ.k fd; k tkuk pkfg, ftl l s l Mēl nqkVuk l s cpk tk l dA ; fn ; s etar u cuk; s tk; s  
 rks detkj i gkfM; ka ds njdus dh l EHkkouk cuh jgrh gA  
 6&l Mēl ekxlā dk fuekZ.k djrs l e; , d s mi dj. kka dk iz ks djuk pkfg, ftl l s pVvkuka dks  
 vf/kd upl ku u igpA  
 7&l Mēl ekxlā dk fuekZ.k dk; Zcjl kr ds ekj e ea ugha fd; k tkuk pkfg, A  
 8&l Mēl ekxlā ds fuekZ.k d i 'pkr- l Mēl ds nkuka fdukjka ij o{kjksi .k fd; k tkuk pkfg, ]  
 ftl l s Hk&L[kyu dh l el; k mRiUu u gkA  
 9&iōrh; {ks=ka ea l Mēl ekxlā dk fuekZ.k djus l s i nZ ogkj ds LFkkuh; ykxka o fo'kskKka l s l ykg  
 Hkh yuh pkfg, A  
 mijkdR l pko fgeky; h {ks= ea fo'kskdj v/; ; u grā pps x; s gA ; s i ; kbj .k l j {k.k  
 , oa vki nk izU/ku dh fn'kk ea l gk; d gks l drs gA bl fn'kk ea l dkj kRed iz kl djus grq  
 l jdkjh foHkkx] LFkkuh; ykx o Lo; d dh l LFkk, a l gk; d gks l drh gA

### I UnHkZ l iph

- Annen, (1882) : Report of the Task Force for the Study Of Eco development in the Himalayan Reseon ( Planning Commision)
- Bansel, P.C and Mathur H.N (1976) : Landslide the Nightmeres of Hill Road Soil Conservation Digest 4(1) : 36-37
- Central Pollution Control Board, Pollution Control Act, Rules & Notificational Issued Their Under: Pollutions Control Law Series: P.C.L.S102/2006: Central Pollution Control Board C.C.C.C Environmental & Forest Ministry, Indian Government 2006.
- Gupta, G.P (1975) : Sediment Productions States Report on Data Collection and Utilizations, Social Coservation Digest 3(2) : 10-21
- Indian Road Congress, Environmental Imapct Assessment (E.I.A) Guidelines for Highway Project (I.R.C: 104-110) Indian Road Congress , New Delhi, (1984)
- Indian Road Congress, Role Road Manual ( I.R.C: S.P. 20-202 Indian Road Congress, New Delhi 2002)
- Joshi, J.(1996): Anthropogenic and Technogonic Landforms and Their Effect on Human Life in a Lessar Himalayan Drainage Basin. Durga Maa Prakashan.
- Joshi, J.(2014): Hill-slope Process and Environmental Hazards (A Case Study From Almora District, Kumaun Himalayas.
- Joshi, J.(2014): Disaster Management in Uttarakhand
- Kumar, K and Rawat D.S (1996): Water Management in Himalayan Ecosystem: A Study of Natural Springs of Almora: Indus Publication New Delhi.

- Rawat, J.S. (1987) : Anthropogenic Transformation of A Channel Network Capacity: An Experimental Study In Kumaun Himalaya Proc.ind.nat.sci.academy, Vol. 54(A), PP 605-06
- Rawat, M.S., Rawat J.S., Rawat Geeta, Shastri Jyoti (1995) : Road Construction and Environmental Hazard.
- Shastri J, Rawat J.S. (1991) : Impact of Human activities in Hillslope Erosion in the Central Hill Slope Erosion in the Central Himalaya. (Indian General of Landscape System and Ecological Studies 14 (1) : 135-138
- Sharma N, Nayar P, & Gangopadhyay S: Envirnmntal Impact Assesment of Road Project Silent Feature Under Revised Notifications (Sep. 14,2006) General of Indian Road Congress 68(3) : (2007) 253-270
- Sharma & Dhyani R & Gangopadhyay S, Review of Environmental Loss & Their Apllycanility to Road/ Highway Project, General of Indian Road Congress 70 (2) : (2009) 165-185
- TezwSani, K. G. (1982) : Watershad Management in the Himalaya, A.G.D.P/R.A 7/7912 Mission Report F. A.O. Rom.
- Valdiya, K.S. (1988) : Geology & Natural Environment of Nainital Hills Kumaun Himalaya. Gyanodaya Prakashan, Nainital